

PART OF S.E. 1/4 OF SEC. 5 & N.E. 1/4 OF SEC. 8, T.6N., R.1W., S.L.B. & M.

# GRANNYWAY ADDITION

TAXING UNITS: 12, 20

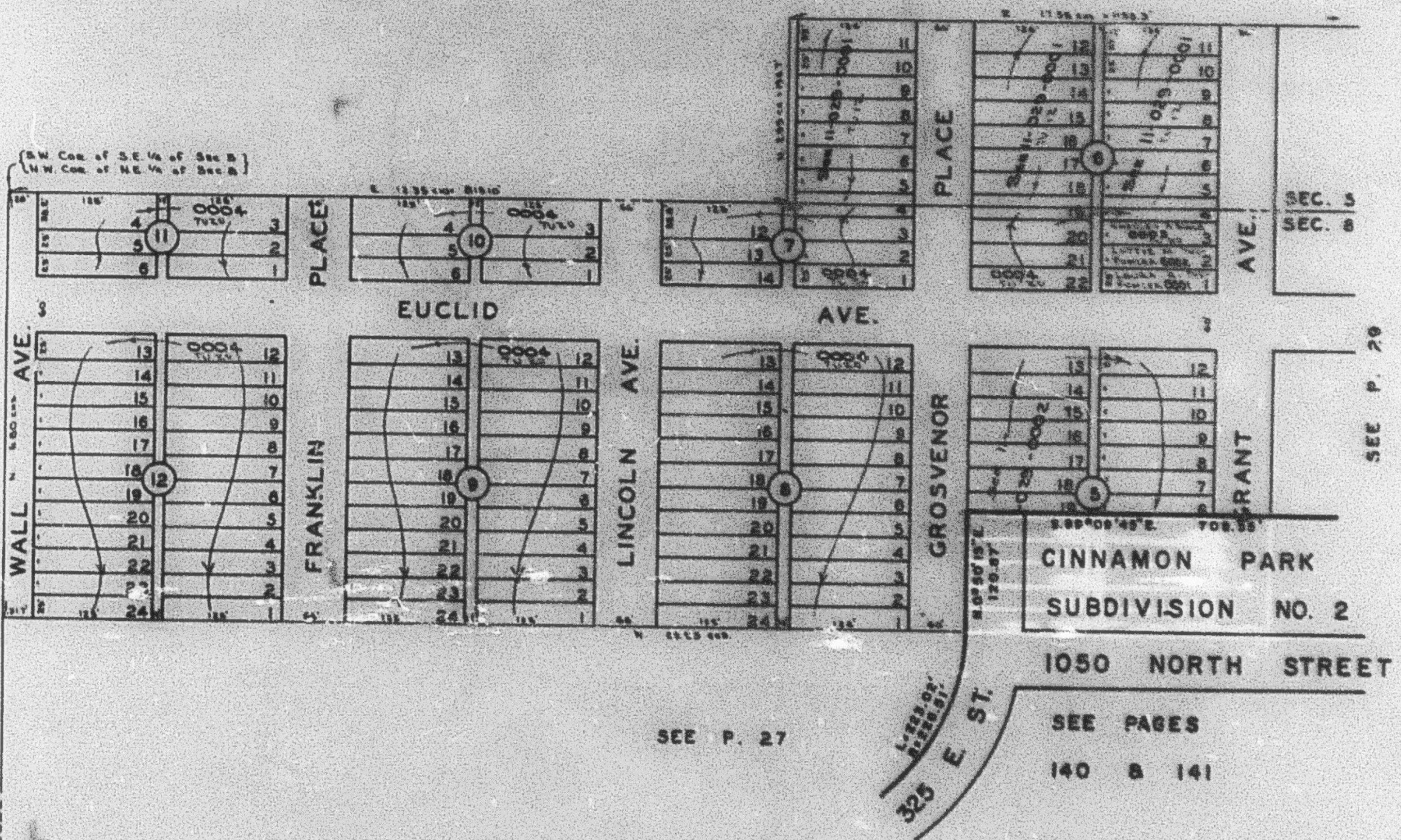
BLOCKS 5 TO 12  
IN TOWN OF HARRISVILLE  
SCALE 1" = 100'

PREFIX: 11-030

PAGES 31, 32  
OMITTED

EXCEPT WHERE OTHERWISE SHOWN,  
ALL LOTS ARE OWNED BY DIXIE ENTERPRISES

SEE P. 17



SEE P. 33

SEE P. 27

SEE P. 20

CINNAMON PARK  
SUBDIVISION NO. 2  
1050 NORTH STREET

SEE PAGES  
140 & 141